



VECTORWORKS 2021

SIMPLICITY TO DESIGN THE COMPLEX

WATCH THE VIDEO

SERVICE SELECT & SUBSCRIPTION CUSTOMERS CAN UPGRADE TO THE LATEST RELEASE TODAY.

[GET STARTED](#)

ARCHITECT
Sketch, draw, and model in a fully integrated BIM workflow.
L: 6,2.7 A: -20.47
 SEE WHAT'S NEW

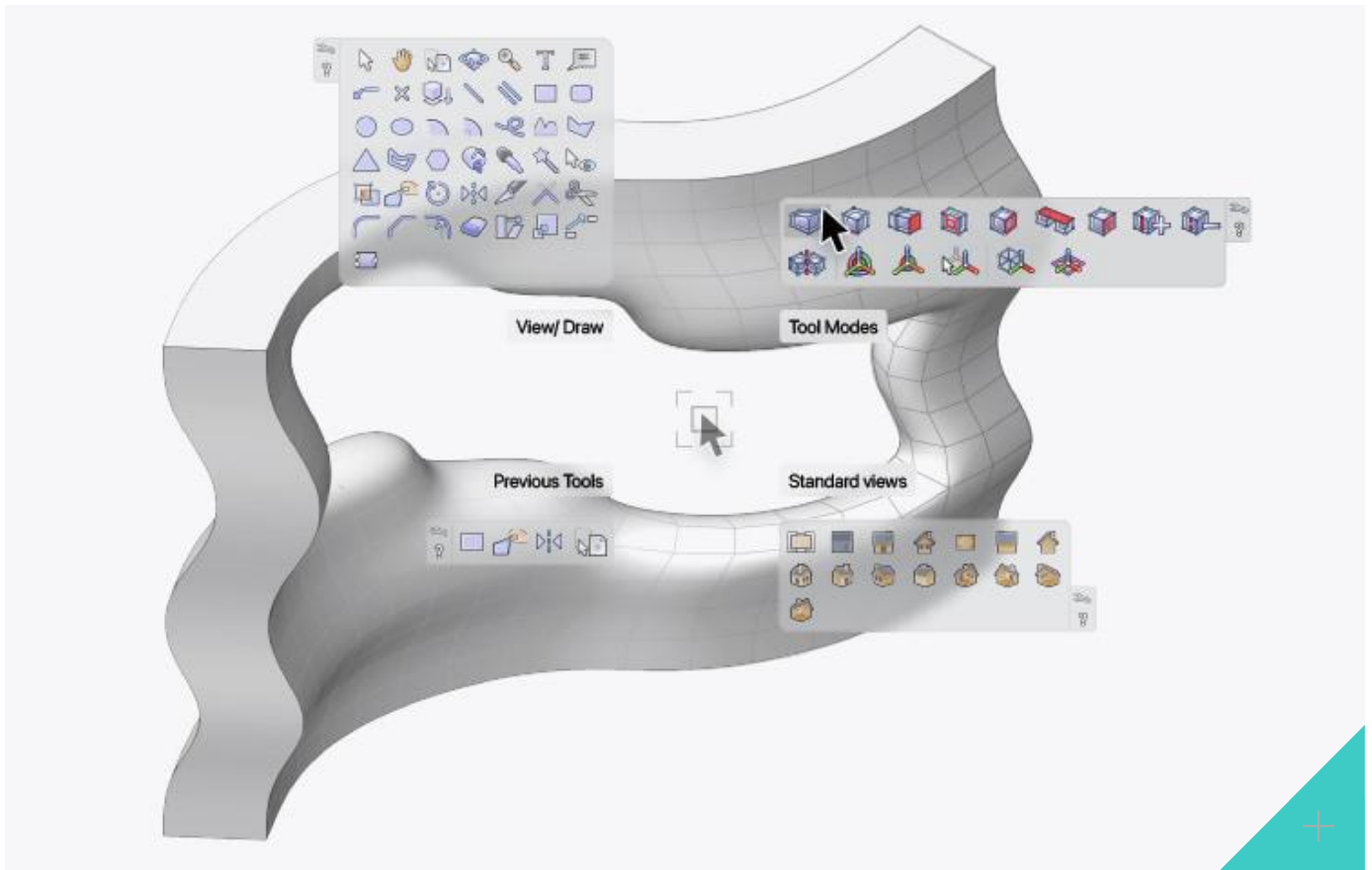
LANDMARK
The all-in-one solution for landscape design and planning.
 SEE WHAT'S NEW

ENTERTAINMENT
The industry-leading design software for the entertainment business.
 SEE WHAT'S NEW

NEW SOLUTIONS TO WORK FASTER AND SMARTER

Filter By:

All ▼

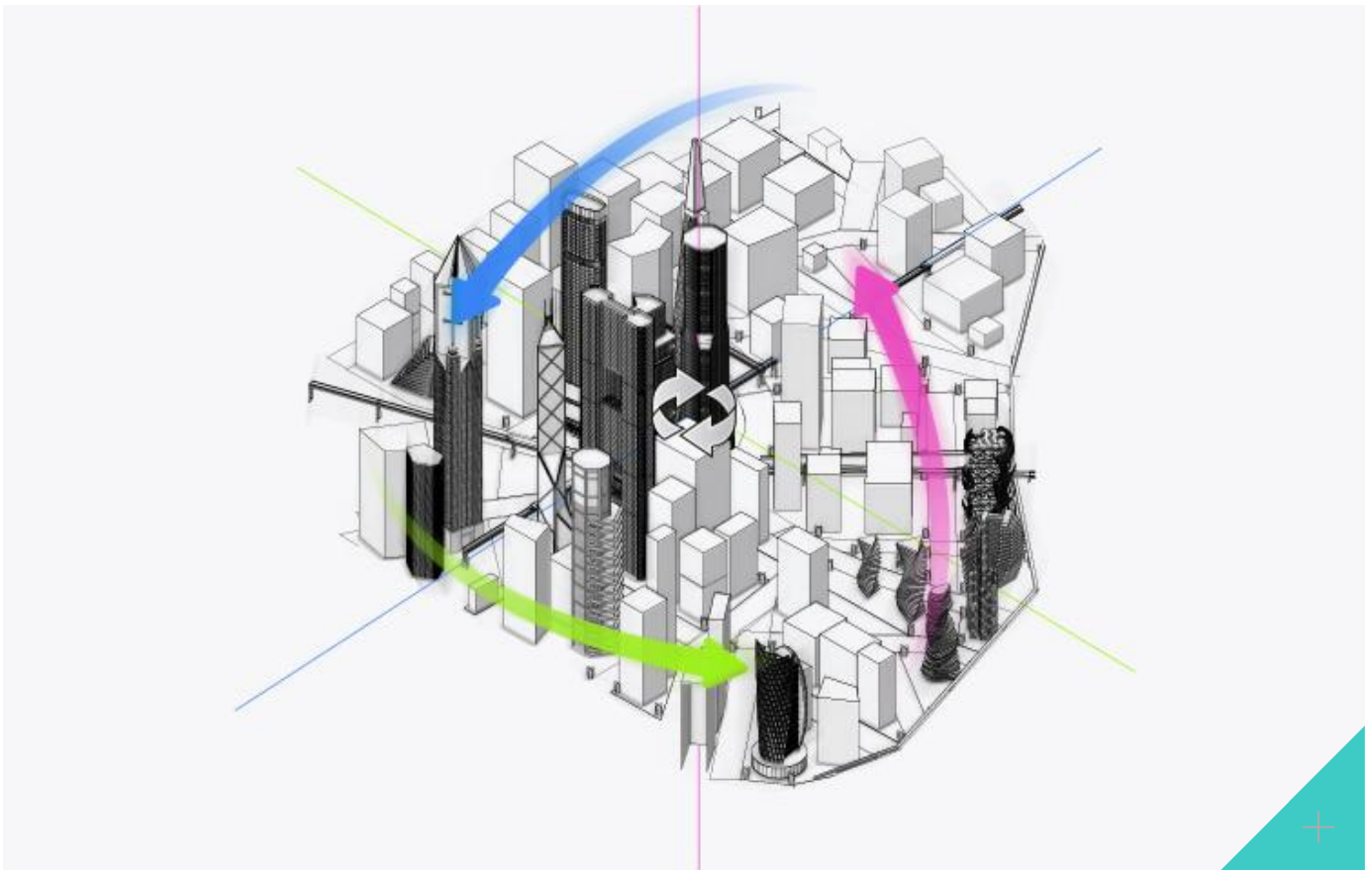


Smart Options Display



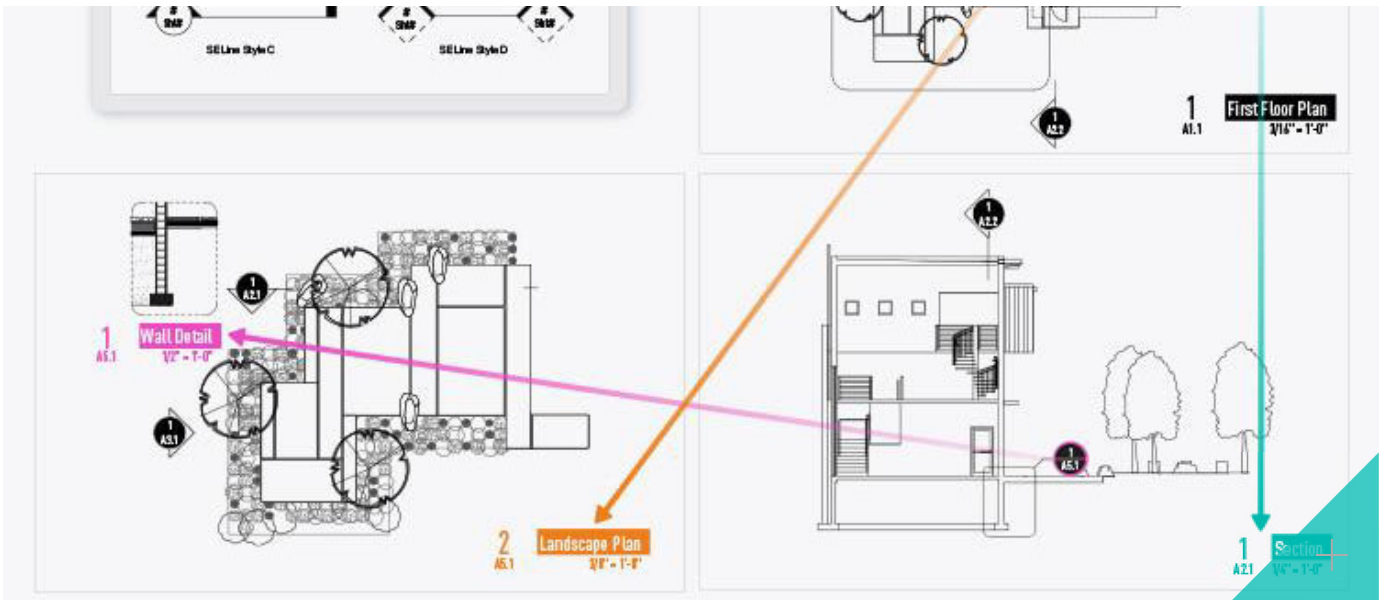


Quick Search

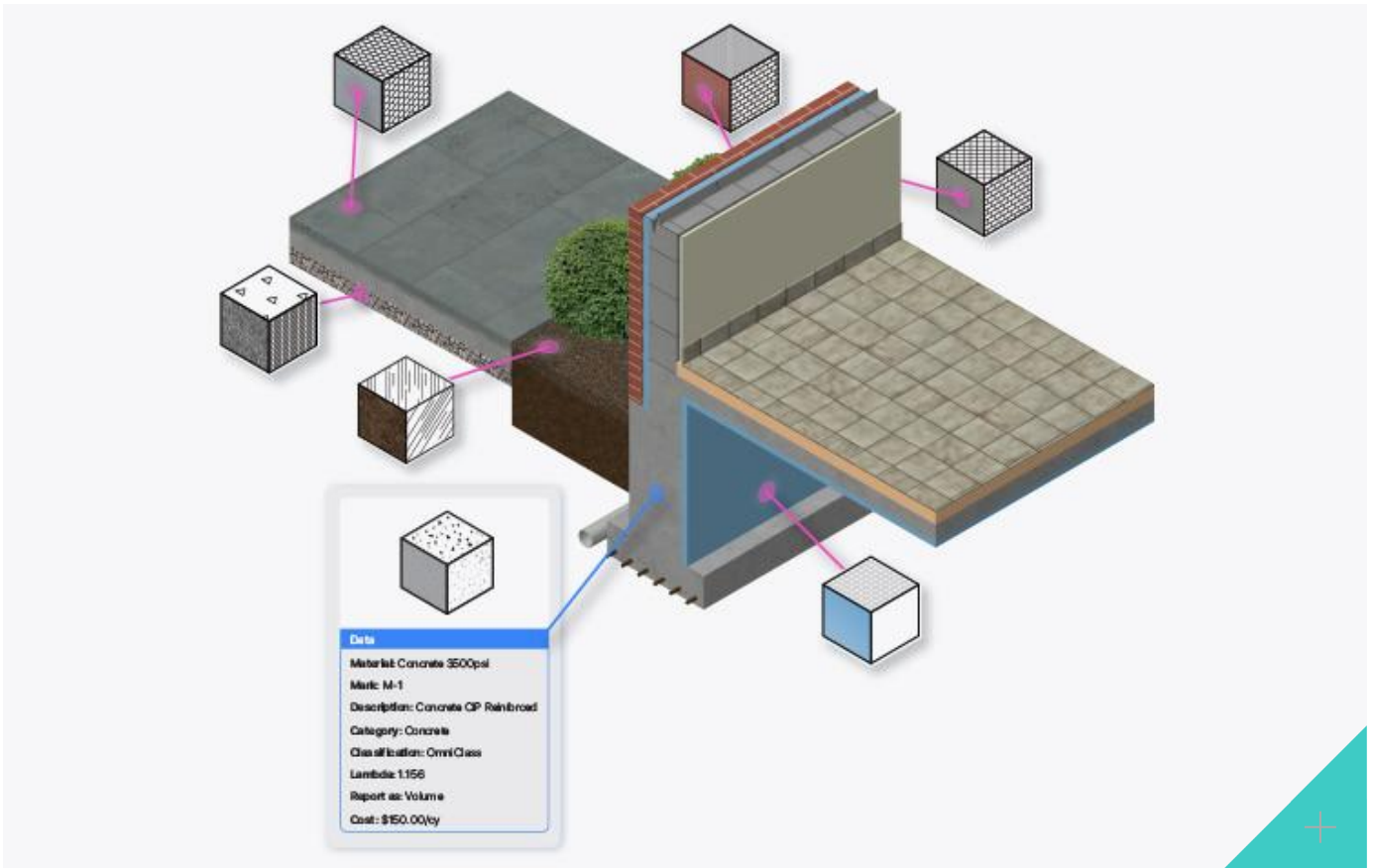


Vectorworks Graphics Module Cache



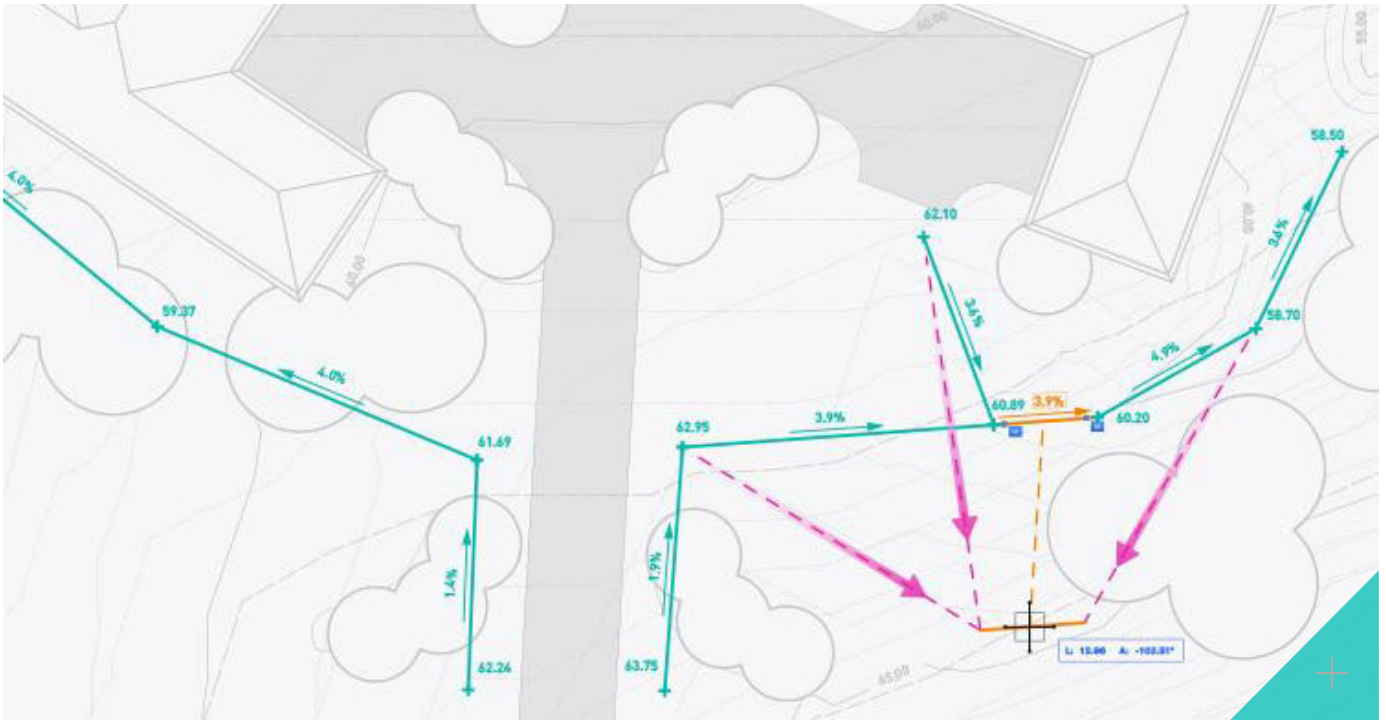


Smart Markers

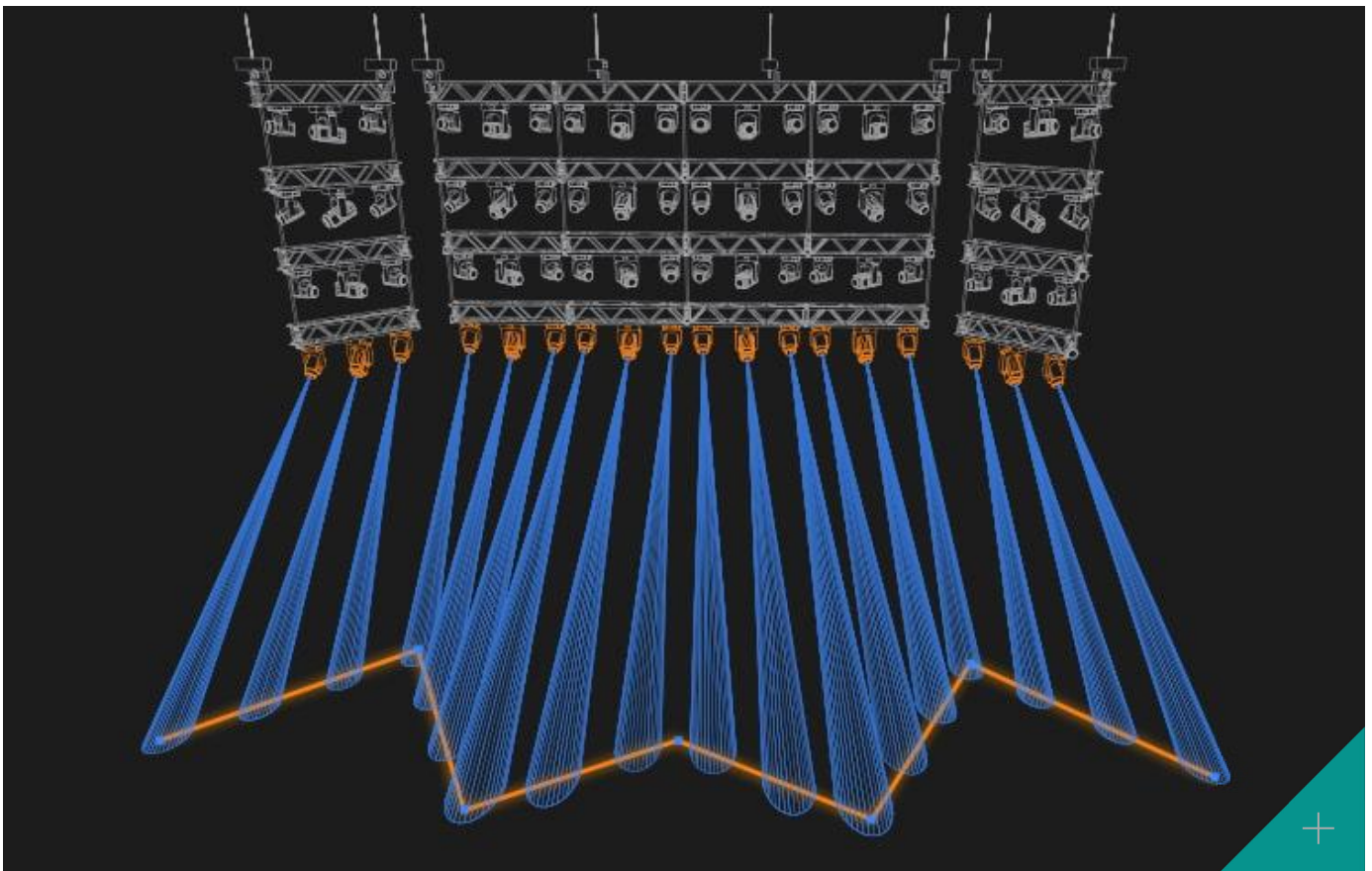


Materials

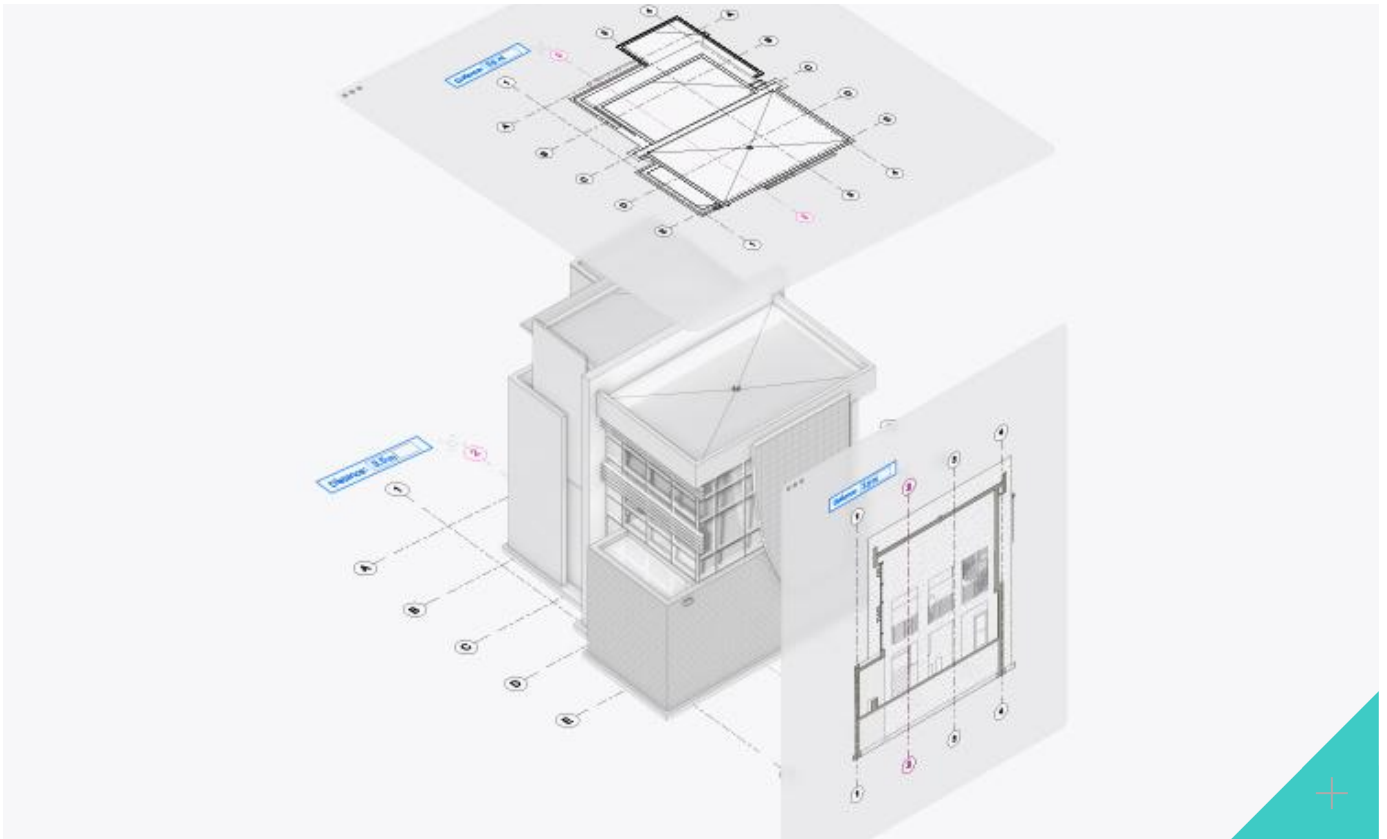




Grade Object Improvements



Lighting Device Object



Structural Grids

LOAD MORE FEATURES



The new structural grid tool is a huge leap forward in coordinated drawings. There is a sense of magic about the tool.

ION WEBSTER, PRINCIPAL OF PULTS & ASSOCIATES, LLP



My jaw dropped to the floor when I realised that the full component section for Landscape Area soil components now interacts with Site Models. This is a game changer.

ERIC BERG, SENIOR ASSOCIATE AT PACIFIC COAST LAND DESIGN



I absolutely love the live interactive ability to focus multiple fixtures at once.

SCOTT BARNES, LIGHTING CONSOLE PROGRAMMER AND OWNER OF I-LIGHT DESIGN

TRY / BUY

FREE TRIAL

BUY NOW

Find your local distributor [here](#).

Images courtesy of:

Architect: Ülemiste Rail Baltic Terminal | Courtesy of 3+1 architects; Landmark: Taicang Yuqin Garden | Courtesy of Placemedia Landscape Architects Collaborative and Eiichi Kano; Entertainment: The 91st Academy Awards | Courtesy of Korins and Drew Dockser

Products

FUNDAMENTALS

DESIGNER

ARCHITECT

LANDMARK

SPOTLIGHT

VISION

BRACEWORKS

CONNECTCAD

Get Vectorworks

WHAT'S NEW IN 2021

SOFTWARE MAINTENANCE

SOFTWARE FOR EDUCATION

CLOUD SERVICES

Community

OPEN BIM

PARTNER NETWORK

CUSTOMER SHOWCASE

DESIGN SCHOLARSHIP

DESIGN SUMMIT

DESIGN DAY

EVENTS

PLANET VECTORWORKS

VECTORWORKS UNIVERSITY

About the Company

OUR STORY

NEWS

MANAGEMENT

CAREERS

CONTACT US

Language Selector



[PRIVACY](#) | [NEMETSCHEK GROUP](#)

United States: 410.290.5114 | United Kingdom: 01635 580318 | Canada: 604.878.0289

© 2021 Vectorworks, Inc. All Rights Reserved. Vectorworks, Inc. is part of the Nemetschek Group.