



Fortemap is an intelligent GIS tool boosted with a 3D viewer and an AI aided auto locating module



- ▶ WebGIS
- ▶ map editor
- ▶ access management
- ▶ smart city app interface
- ▶ export, import
- ▶ publishing
- ▶ measurements

More ▼



High performance pointcloud viewer and analyzer



- ▶ measurements
- ▶ coordinates
- ▶ dimensions
- ▶ area
- ▶ volume calculation
- ▶ cross section cutting
- ▶ DEM
- ▶ 3D models
- ▶ ortophoto
- ▶ measurement on images

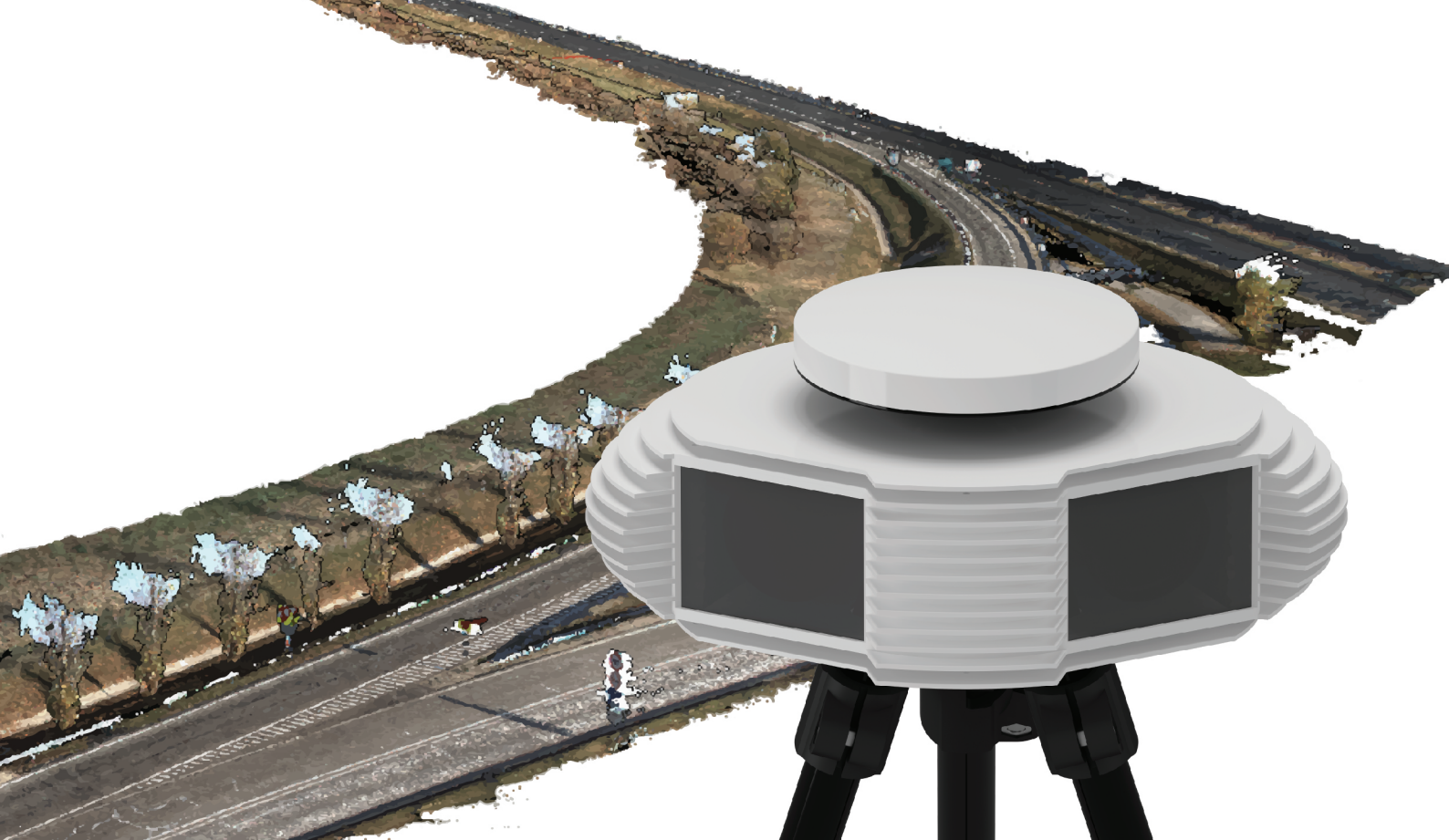
intermap.hu



Utilize AI for automatic classification and accurate positioning of objects

- ▶ manhole covers
- ▶ traffic signs
- ▶ potholes
- ▶ hydrants
- ▶ electric poles
- ▶ visible roadside objects
- ▶ error detection





GeoMeter® is a mapping device fully based on machine vision and photogrammetry

Take on site data collection to the next level! Mapping with GeoMeter is more effective, results more data outputs while minimizing on-site work

[More ▼](#)

